



2017-2022 Ford Super Duty Kit
See Last Page for 2023+ model years
Switch Panel and Power Module Installation

Required Tools

10mm Deep Socket	Razor Blade	Phillips Screwdriver
10mm Open End Wrench	11mm Open End Wrench	7mm Short Socket
5/32 Allen Wrench	5mm Allen Wrench	7/64" Allen Wrench
5/8" Drill Bit	1/4" Drill Bit	



Mounting the Power Module

- 1) Using a razor blade or knife, cut the fabric tape around the ground cable, releasing it from the hold down anchor. *Use caution to avoid cutting into the cable*.
- 2) Using a 10mm deep socket, remove the nut that is on the engine side and pull the bracket up



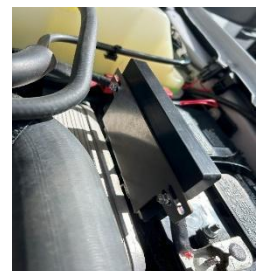
- 3) Insert new bracket under the battery hold down strap and battery cable bracket, with the ears facing the engine. Reinstall the battery hold down strap using the 10mm deep socket. *Be sure the new bracket is straight and tightened securely*. Use zip ties to secure the ground to the stock bracket.



- 4) Install Power Module bracket on the 2 holes closest to the center. The bracket will be facing outward. Using a 5/32" Allen and an 11mm open-end wrench, secure the bracket to the battery mount. *Use caution when handling hardware to be sure you don't drop it into the dark abyss below*



- 5) Install the Power Module, using the Phillips head screws and serrated nuts, provided in the switch panel system hardware kit. Tighten with a 7mm wrench, or socket, and a Phillips head screwdriver. *Note: Bottom slots are for the SP9100 and the top are for the RCR-Force®12*



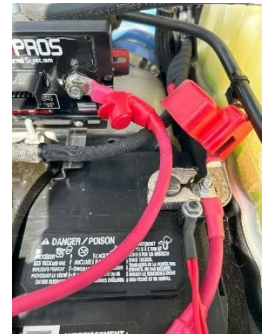
- 6) To create an anchor point for the battery/power cable drill a 1/4" hole on the positive battery terminal. There is a flat spot that is ideal for this.



- 7) Use the included M6 bolt to create a stud for the power wire. (See Photo 8). Tighten the nut using the 10mm deep socket.



- 8) Install power wire on the Power Module stud as well as the newly created attachment point on the battery terminal. Confirm that all connections are tight.



- 9) Communication cable routing – There is a firewall grommet that has nothing passing through it. You can cut a slit or remove the top completely. Fish the 4-pin white connector end of the cable from the engine bay into the cab of the vehicle.



Mounting the Switch Panel

Please read this completely because we will show options for a drill and non-drill option

The Drill (clean Install) Option



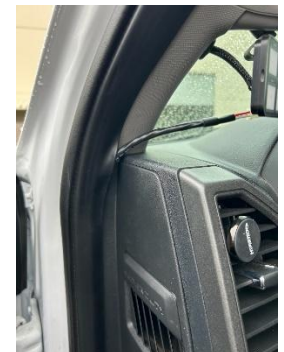
- 1) Remove Interior door trim and door seal. This is an easy step since all items clip into place.
- 2) Remove the 2 bolts, that hold the A-Pillar grab handle in place, using a 10mm socket, and discard the bottom cap/bolt cover. This will then have clips that allow the handle to come off.
- 3) Drill a 5/8" hole about 1.5" below the bottom bolt on the A-pillar grab handle.
- 4) Feed the Communications cable up the A-pillar to where the Switch panel will be mounted.
- 5) Push the M6x45 bolt through the Switch Panel bracket and add the aluminum spacer. Use the gromet and push the cable through the grab handle and make connection with the Communications cable. Reinstall the A-pillar grab handle. Secure the Switch panel to the mount using a 7/64" Allen wrench.



- 6) Reinstall all trim and door molding.

The No drill Option

- 1) You can run the communications cable on the inside of the door seal, and have it come out right before the switch panel.



Helpful Hints

To find a 12V source for the light blue “Ignition” wire, you can tie into the fuse box, or use a factory upfitter wire. The wire needs to see 12V when the key is in Accessory or Ignition position. Please see your owner’s manual to find options, as there are several that will satisfy the requirement.

The white “Lights” wire, which is used to make the panel backlighting dim when the running lights are on, can be connected to a marker or head light wire using the T-tap that comes with the Switch Panel Installation kit.

We appreciate your support of our company and our American Made products. We take great pride in the quality of our products and our customer support. If you require any assistance, please feel free to reach out to us via email at Sales@switch-pros.com or by phone at (949) 581-2991. Our office is open Monday through Friday, from 8:30am-4:00pm Pacific time.

See Page 4 for 2023+ Model Year installation

Switch Panel Installation for 2023+ Model Years

- 1) Insert a small pick or screwdriver in lower handle cover and pop the cover off.
- 2) Remove A-Pillar
- 3) Reinstall the cover and drill a ¼” hole at the bottom bolt perpendicular to the mounting flange of the A-pillar. This should assist in making an oval hole.
- 4) Remove the cover and drill a 11/16” hole at the same angle.
- 5) A file will need to be used to get the angle fine-tuned for the angle inside of the cab so that the switch panel is level.
- 6) Install the Switch panel in the same manner as the 17-22 models/

